

E-LITE semicon

Aurora™ LED High Bay

PRODUCT FEATURES & BENEFITS

- System light efficacy 145~150 LPW
- Optional Plug-and-play Motion Sensor
- Rugged One-piece Die Cast Housing.
- 5 Years warranty
- IP66
- CE, RoHS
Pending - ETL, DLC Premium, CB, SAA

SPECIFICATIONS

PERFORMANCE

LED Chip	Philips Lumileds
Color Temperature	4500~5500K (Standard) 2500~6500K (Optional)
Lumen Maintenance	L70>120,000 hours TM-21 Calculated
Input Voltage	100-277 VAC, 220-240VAC, 277-480VAC
Power Factor	0.95 minimum
IP Rating	IP66
IK Rating	IK10
Surface Treatment	Corrosive resistant polyester powder coat finish
Lens Material	PC 3000U

ENVIRONMENTAL

Operating Temperature	-30°C ~ 50°C / -22°F~ 122°F
Storing Temperature	-40 °C~ 80°C / -40°F~ 176°F
Humidity	15% to 95% RH

PHYSICAL

Fixture Material	Aluminum Alloy
------------------	----------------

WARRANTY

5 Years

TYPICAL APPLICATIONS

- Warehouse/Manufacturing Facilities
- Convention Centers/Sporting Arenas
- Big-Box Retail Stores
- Cold Storage Facilities
- Gymnasiums

E-LITE semicon

■ Specifications

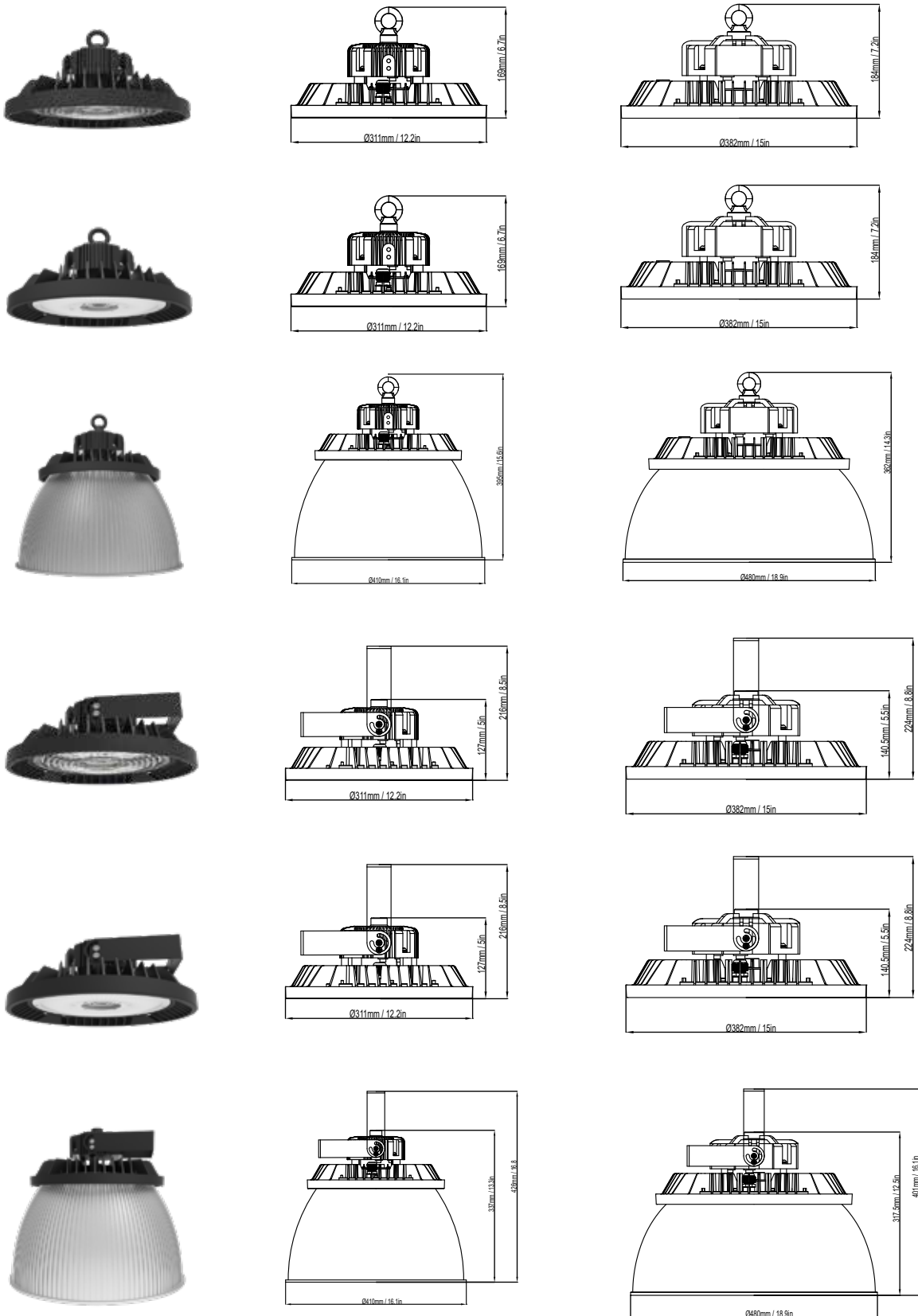
Picture	Part#	Power	Efficacy(IES)	Total Lumen	N.W	CRI	LED Chip	Product Dimensions
	EL-AUHB-100	100W	150LPW	15,000lm	3.4kg/7.5lbs	≥80	Philips Lumileds 2835	311×311×169mm 12.2×12.2×6.7in
	EL-AUHB-150	150W	150LPW	22,500lm	3.4kg/7.5lbs	≥80	Philips Lumileds 2835	311×311×169mm 12.2×12.2×6.7in
	EL-AUHB-200	200W	150LPW	30,000lm	3.4kg/7.5lbs	≥80	Philips Lumileds 2835	311×311×169mm 12.2×12.2×6.7in
	EL-AUHB-240	240W	145LPW	34,800lm	3.4kg/7.5lbs	≥80	Philips Lumileds 2835	311×311×169mm 12.2×12.2×6.7in
	EL-AUHB-300	300W	150LPW	45,000lm	6.0kg/13.2lbs	≥70	Philips Lumileds 3030	382×382×182mm 15×15×7.2in

E-LITE semicon

Product Dimensions

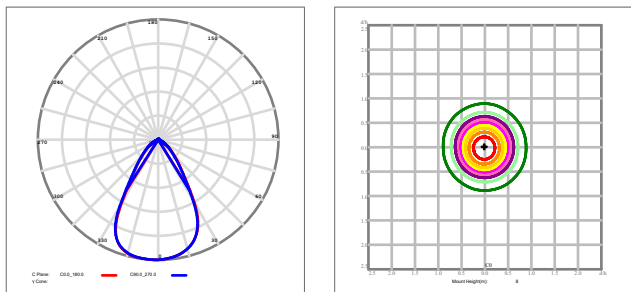
100W~240W

300W

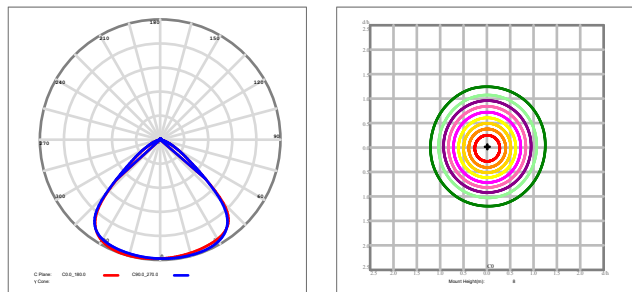


■ Photometrics

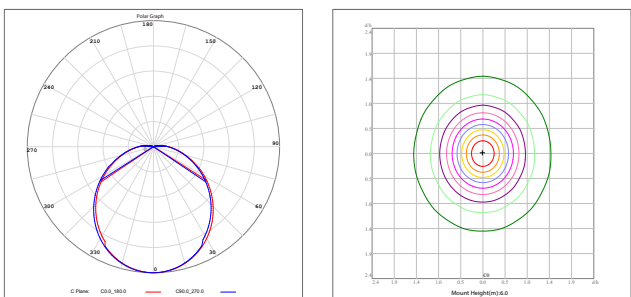
60° Ribbed Lens



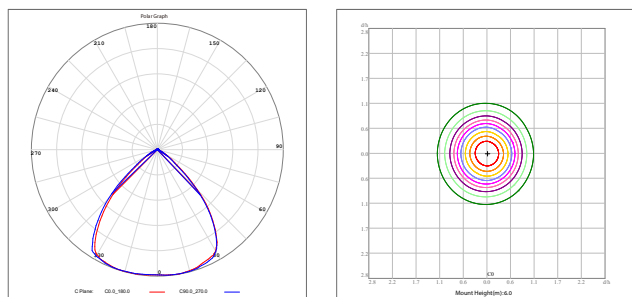
90° Ribbed Lens



120° Diffused Dome Lens



90° Reflector



■ Dimming Control



① With sufficient ambient light, the sensor does not switch on the lamp.



② With a low light level, the sensor switches on the lamp when motion is detected.



③ After hold time, the sensor dims the lamp at a low light level if no new motion trigger.



④ After stand-by period, the sensor switches off the lamp if no motion is detected in its detection zone.

Setting

Daylight sensor: 10lux/30lux/50lux;

Setting

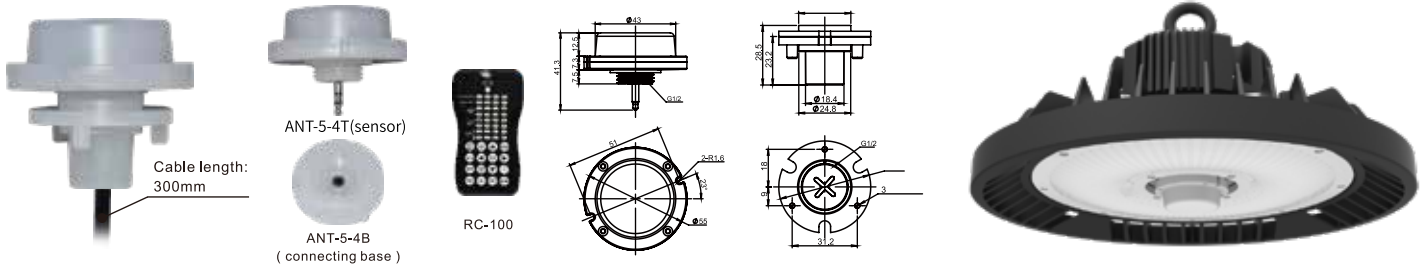
Detection sensitivity: 20%/50%/75%/100%;
Hold-time: 10s/1min/5min/10min/15min/20min/30min/60min;

Setting

Stand-by dimming level: 0%/10%/30%/50%;
Stand-by period: 1min/30min/60min/+∞

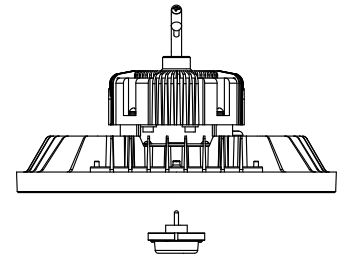
E-LITE semicon

■ Plug-and-play Microwave Motion Sensor



SPECIFICATIONS

Operating voltage	12~24Vdc
Max. current sink	50mA±5%
HF System	5.8GHz±75MHz
Transmission power	<0.2mW
Dim control output	0-10V
Detection radius	20%/50%/75%/100%(1-8m)
Mounting height	Max 50ft.(15meters)
Time setting	10s/1min/5min/10min/15min/20min/30min/60min
Light-control	24H/10LUX/30LUX/50LUX
Temperature	-4°F ~ +140°F (-20°C ~ +60°C)
IP	IP65



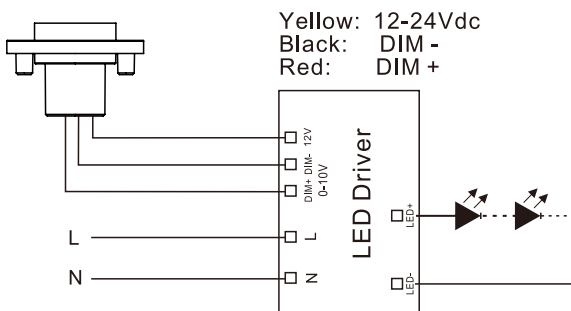
⚠ WARNING

NOTE: Warm up time is 15seconds. After the sensor connects input power first time, the light will keep on 15seconds, then go to dimming to work normally.

NOTE: Factory Default Setting: 100% sensitivity, Hold on time: 5min, Daylight sensor is ☀, Dimming level: 30%,Dimming time: 60minutes.

NOTE: Any setting changed by remote control, the led light that sensor connect will on/off as confirm.

WIRING DIAGRAMS



Yellow: 12-24Vdc
 Black: DIM -
 Red: DIM +

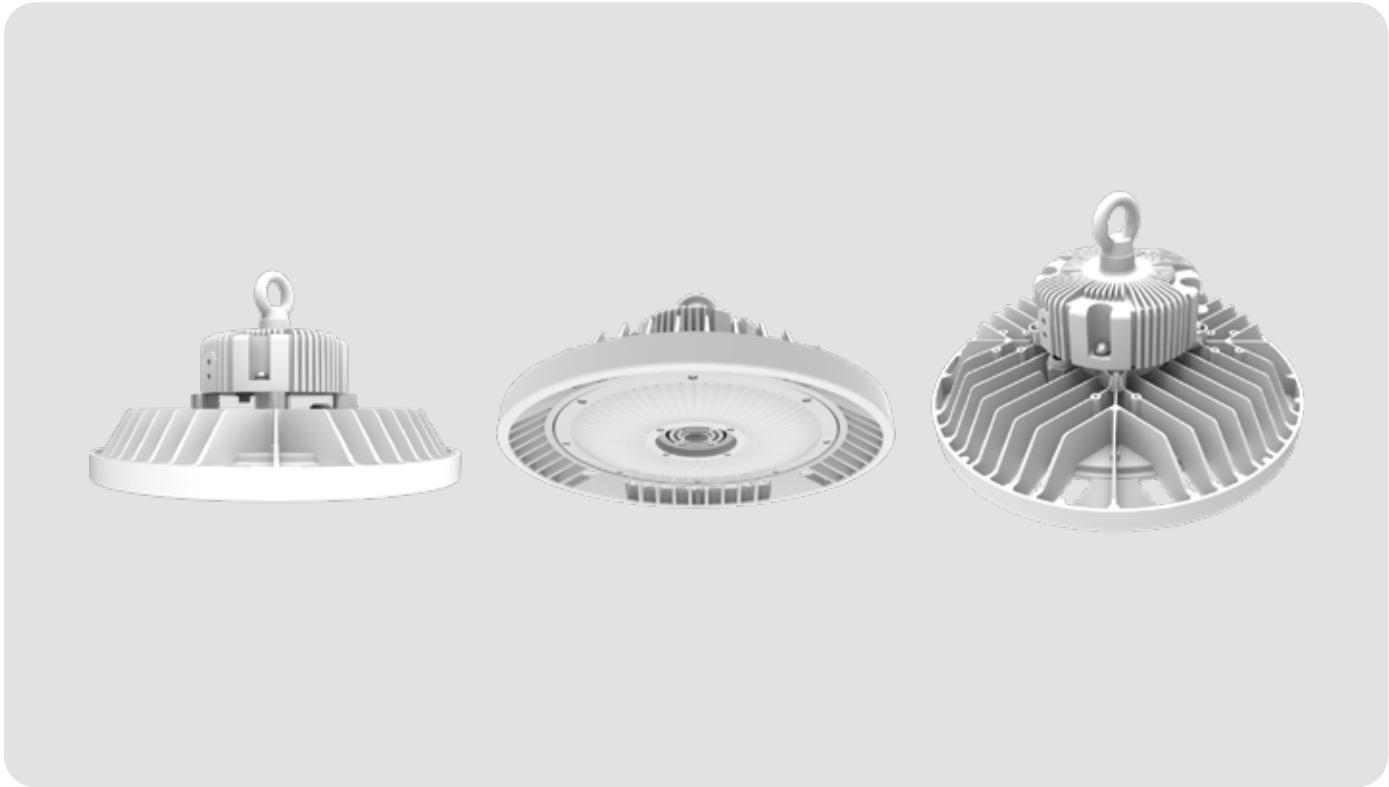
Cable specifications:
 AWM 2464 /22AWG /80°C /300V

E-LITE semicon

■ Accessories

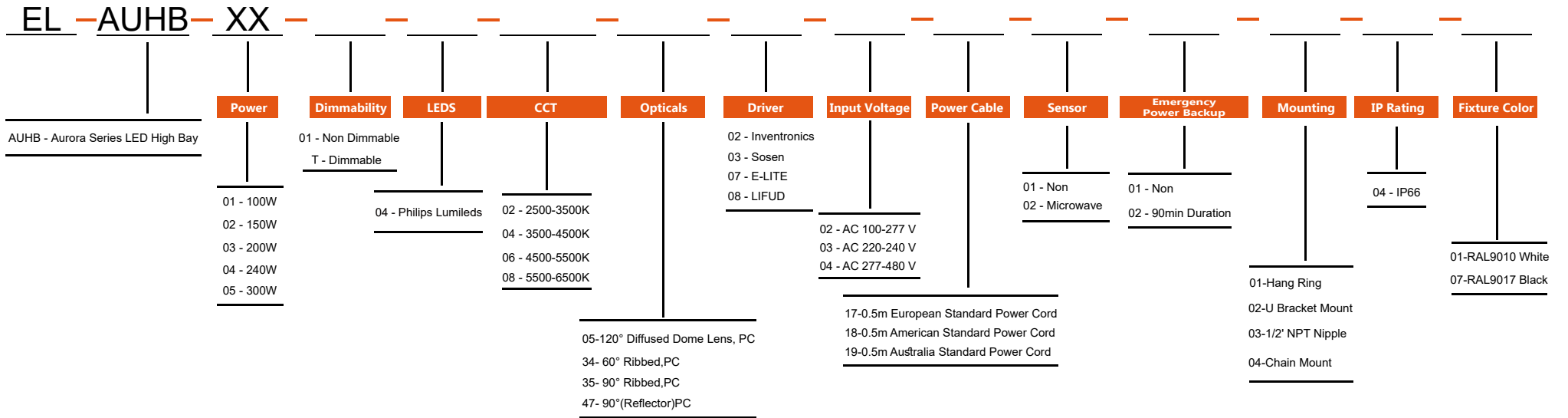
Image	Applicable Power	Product Code	Product Description
	100W~300W	SP-SE	Plug-and-play Microwave Motion Sensor
	100W~300W	SP-HR	Hang Ring
	100W~300W	SP-HK	Hook Ring
	100W~300W	SP-UB	Standard U Bracket
	100W~300W	SP-NPT	1/2' NPT Nipple
	100W~300W	SP-CM	Chain Mount
	100W~300W	SP-60PC	60° Ribbed Lens (PC)
	100W~300W	SP-90PC	90° Ribbed Lens (PC)
	100W~300W	SP-120PC	120° Diffused Dome Lens (PC)
	100W~300W	SP-TS-90PC	90° Reflector (PC)
	100W~300W	SP-PM	Protection Mask

E-LITE semicon



E-LITE semicon

Ordering Information (Standard)



CB SAA (Pending)

